

159 Gerrard Street East – Unit B Check-In Instructions

Contact

If you need help finding the entrance please call or text: +1 647 268 9308. Text if I do not pickup and I will call back. If it's late at night please call twice to disable the silent feature on my phone.

Location

The apartment is located at the back of the building and is accessible by Glenholme Pl

Google Maps Link

The link for Google Maps is below:

<https://maps.app.goo.gl/Z53ebfU7oEasHBnG9>

Google Maps Plus Code

If the above link is not working, please go into Google Maps and search for the following plus code: MJ6G+58V Toronto, Ontario

Directions to your apartment

1. Drive to 118 Pembroke Street and Turn right onto the Laneway (Glenholme Pl)



2. Drive through the Laneway until you reach the speed bump sign

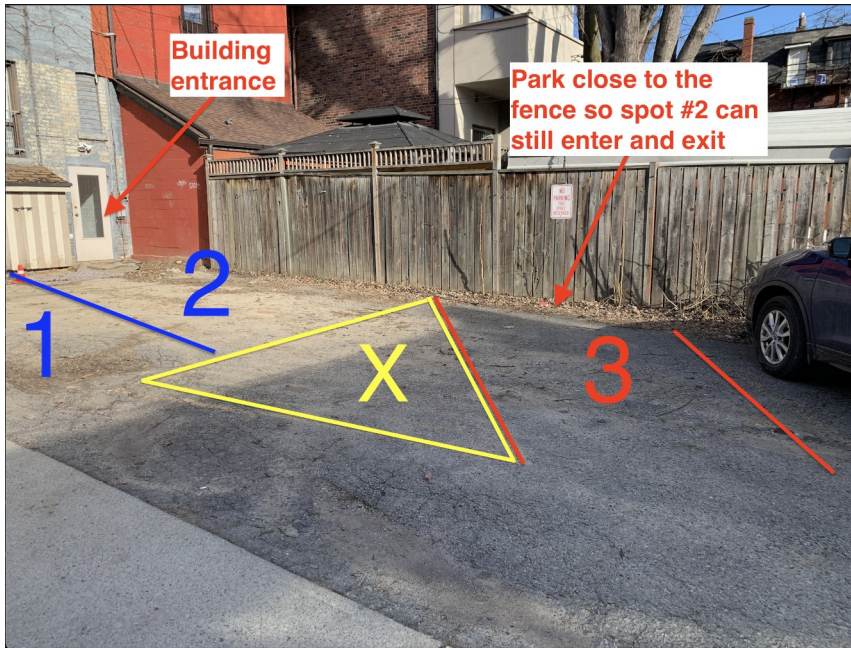


3. Turn right at the speed bump sign

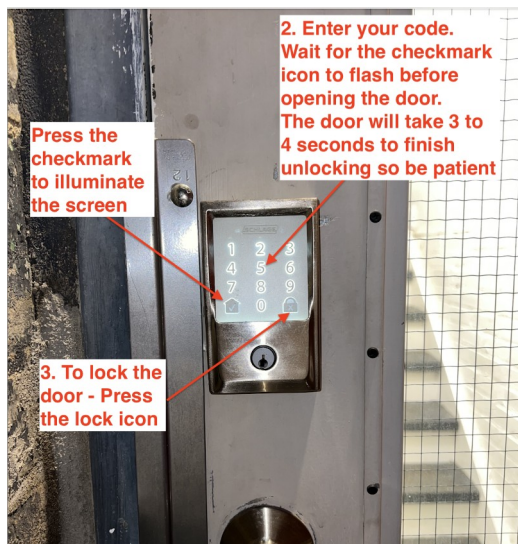


4. The parking lot is on the right. Your spot is #3 Enter the building through the back door shown below.

Please park up close to the fence so the person in spot #2 can still get past you to enter and exit



5. Unlock the door



1. Press the Checkmark icon to illuminate the screen
2. Enter your 4 digit code. Wait for the Checkmark icon to flash before opening the door. The door will take 3 to 4 seconds to finish unlocking so be patient.
3. To lock the door when leaving Press the Home Icon

6. Walk down the steps

Your Apartment is at the bottom of the steps.

To unlock your apartment
Enter your 4 digit code + checkmark

To lock your door press the checkmark button