

261-2 Berkeley Street House manual

Emergency Contact

Phone: [+1 \(647\) 268-9308](tel:+1(647)268-9308)

Text: [+1 \(647\) 268-9308](tel:+1(647)268-9308)

Text if I do not pickup and I will call back. If it's late at night try calling twice to disable the silent feature on my phone.

Direct Bookings

To save on booking fees, please book with us direct.

Our contact details are:

Phone: [+1 \(647\) 268-9308](tel:+1(647)268-9308)

Text: [+1 \(647\) 268-9308](tel:+1(647)268-9308)

Email: Bookings@SmilingB.com

Website: www.SmilingB.com

Check-Out Time: 11am

Wifi

Wifi network 261 Berkeley

Wifi password: SmilingBuddhaRentals

Safety Items

- Fire extinguisher is in the kitchen beside the stovetop and smaller window
- First aid kit is in the bathroom. Bottom right side drawer

Hot Water

The hot water tank is in the basement. If the water is coming out cold, leave the hot water running for a minute. The left side of the bathroom sink is for hot and you can leave it running a minute.

Water Pressure

This is an apartment in an old Victorian. If a lot of neighbours are showering at once, water pressure can be an issue. Unfortunately, there isn't much we can do about it. Please wait a few minutes and try again.

Working the Keurig

1. fill the back reservoir with a cup of water
2. open front top compartment
3. insert new Keurig pod
4. close front top compartment.
5. wait for light to blink and push the top button to start.

The Washer and Dryer

This is a combo washer and dryer. The dryer is ventless so it is not as efficient as a normal dryer. Expect it to take 3 hours to properly dry a small load so be patient. If you interrupt it while it's drying the door will remain locked until it cools down. This may take up to 30 minutes. If you are having problems opening the door, turn the unit off completely and wait 30 minutes for it to cool before turning it back on. The locked icon should disappear and allow you to open the door.

Living Room

The living room light and fan is turned on and off by the light switch beside the patio door. Use the remote control to change the settings

Stereo

- The pioneer stereo has bluetooth. to use it push the power button and then the input button until you see the 'pairing' indicator on the panel. It might take a minute and a few tries to pair with your phone.

Toiletries

- Hair dryer is in the bottom drawer of bathroom

Summit Cooktop

1. The power button is on the bottom right side pushing it puts the cooktop in ready / standby mode
2. To select the desired element to heat push the appropriate button labelled hot. The left button selects the top element and the button on the right selects the bottom element
3. Once you have selected the element it's corresponding indicator will blink
4. While the indicator is blinking push + or - to set the desired temperature
5. When finished with the cooktop bush the power button to turn it off. the residual heat indicators will remain on as a reminder the cooktop is still hot.

Garbage

Please place your garbage in the bins at the front of the building.

Black Bins are for garbage

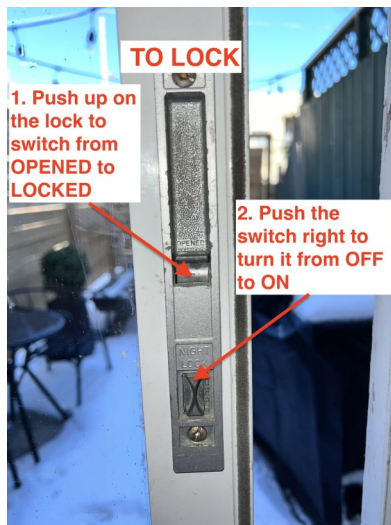
Blue Bins are for recycling

Green Bin is for compost

To Unlock the Patio Door



To Lock the Patio Door



Troubleshooting the locks

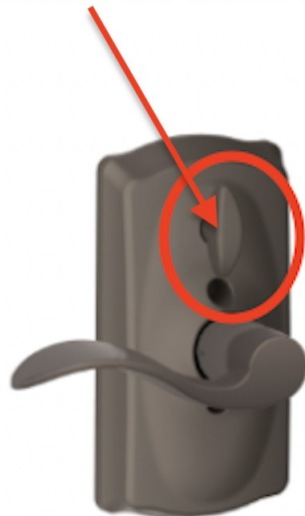
For safety reasons, the locks will always be unlocked when you exit. If the locks are not locking properly, please turn the thumbscrew on the inside.

Unit 2 lock



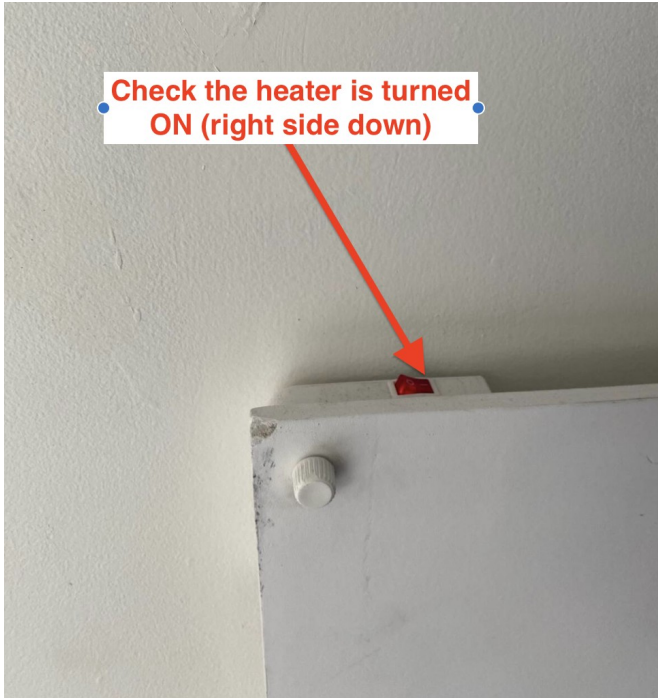
Building Front Door

Thumbturn should be horizontal for locked



Bedroom Heater

If the bedroom heater is not working, please check that it is turned on.



Bathroom Heater

Beside the toilet

